

Daily injecting with aluetta™



Step 1: Choose and prepare your injection site

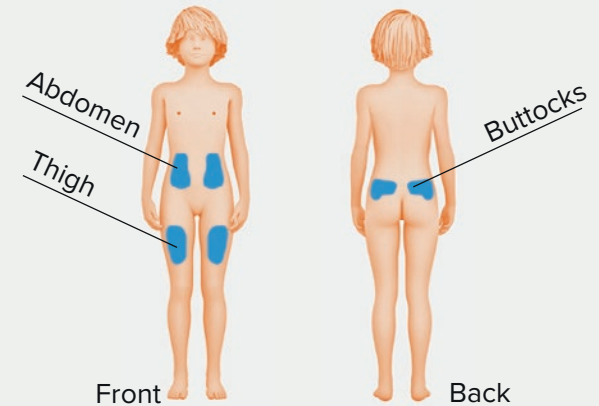
Note: Your healthcare professional should show you the injection sites to use.

1. Select a different injection site each time you inject to reduce redness, irritation or other skin problems.

Examples of common injection sites include:

- Abdomen
- Thigh
- Buttocks

2. Prepare the site as directed by your healthcare professional.



Daily injecting with aluetta™

Step 2: Attach your needle

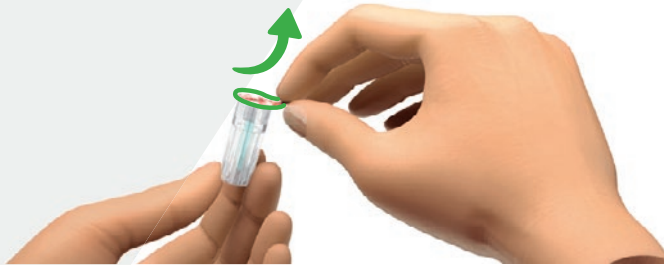
Note: Applies to Pencylcap, Micro/Ultra-Fine and AutoShield DUO needles.

1. Check the peel paper on the needle to make sure it is not broken and expiry date has not passed.

Warning:

Do not use needle if peel paper is broken or expiry date has passed. Doing so may cause an infection. Discard in your sharps container and get a new needle.

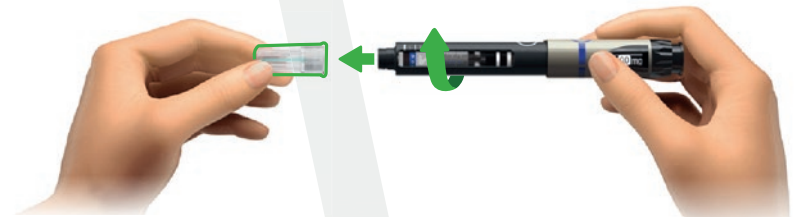
2. Peel off the peel paper from a new needle and discard in trash.



3. Hold needle straight and twist it onto the cartridge holder until you cannot twist anymore.

Warning:

Do not remove the outer needle cover until ready to prime or inject.



Daily injecting with aluetta™

Step 3: Dial your dose

Note: Always set your dose according to your prescription. Call your healthcare professional if you are unsure of the prescribed dose.

1. Turn the dose selection knob until your intended dose is visible in the dose window.

Important:

If you cannot turn the dose selection knob to your prescribed dose, the cartridge does not contain enough medicine. You will need to use two cartridges.



Using multiple cartridges to complete your prescribed dose

If the dose selection knob does not turn to your prescribed dose, the cartridge does not have enough Saizen (somatropin) left. A new cartridge is required to deliver your full dose.

2. Follow the Step 4 “Inject your dose” to inject the first part of your prescribed dose and empty the cartridge. Use the dose amount of your first injection to calculate the remaining dose.
3. Proceed to Step 11 in the aluetta™ Instructions For Use (IFU) “Maintain and store your aluetta pen injector” to clean the cartridge holder.
4. When ready for the second injection, wash your hands again and take a new cartridge.
5. Follow the instructions in the IFU starting with Step 3 “Inspect your cartridge” to replace the empty cartridge with a new cartridge and perform the priming as in Step 7 “Prime your aluetta pen injector”.

Daily injecting with alvetta™

Step 3: Dial your dose (continued)

6. Calculate your remaining dose by subtracting the Prescribed dose minus the dose already injected – see sample calculation on the right.
7. To dial your dose, turn the dose knob until your intended dose is visible in the dose window.
8. Rotate injection site as instructed in Step 1.
9. Proceed from Step 4 “Inject your dose” to inject the remaining dose.

Sample calculation of remaining dose:

Prescribed dose	1.5 mg
Minus amount already injected in first injection	(0.7 mg)
<hr/>	
Remaining dose to inject	0.8 mg

Daily injecting with aluetta™

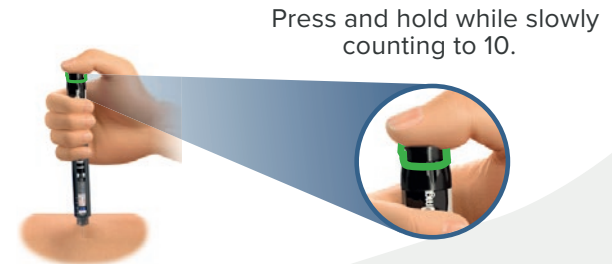
Step 4: Inject your dose

Caution: To avoid accidentally bending your needle, insert straight (90° angle) into the injection site.

1. Hold the aluetta pen injector at a 90° angle to the injection site. Face the dose window towards you and then push the needle into your skin.



2. Use your thumb to press the injection button all the way in and hold it down while slowly counting to 10. When removing the needle from the skin, please keep your finger pressed on the injector button.



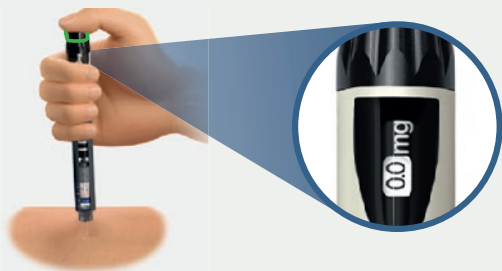
Daily injecting with aluetta™

Step 4: Inject your dose (continued)

Important:

Before removing the aluetta pen injector from the skin, make sure the number “0.0” appears in the dose window to ensure you injected the full dose.

3. If the number “0.0” does not appear, press the injection button again and continue pressing until the number “0.0” appears.



4. Remove the needle from your skin and then release the injection button.

If you use the AutoShield DUO Safety needle:

After injection, the protective sleeve locks automatically and you should see the red locking indicator.



Pencylcap and
Micro/Ultra-Fine
needles



AutoShield DUO Safety needle

Daily injecting with aluetta™

Step 5: Remove and throw away your used needle and empty cartridge

Warning:

You must remove the needle from the aluetta pen injector and throw it away after each injection to avoid risk of infection.

1. If you use the Pencylcap or Micro/Ultra-Fine needles:

Warning:

Do not recap the Pencylcap or Micro/Ultra-Fine needle with the needle shield as it can lead to needle stick.

To help you recapping the needle, push the aluetta pen injector into the outer needle cover in the well of the storage box until you cannot push it any more.



Pencylcap and Micro/Ultra-Fine needles

Daily injecting with aluetta™

Step 5: Remove and throw away your used needle and empty cartridge (continued)

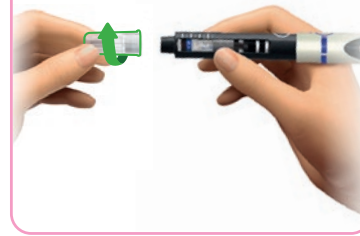
Warning:

Do not place your fingers on either end of the needle as it can lead to a needle stick injury.

2. For the Pencylcap, Micro/BD ultra fine and AutoShield DUO Safety needles:

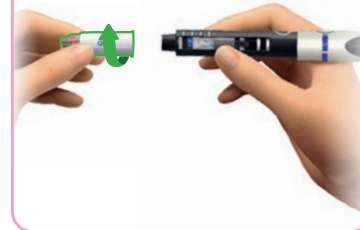
Hold the needle at the sides and twist it off to remove it from the aluetta pen injector.

Pencylcap and
Micro/BD ultra fine needles



OR

AutoShield DUO
Safety needle



Daily injecting with aluetta™

Reporting of side effects:

If you get any side effects, talk to your doctor, pharmacist or nurse. This includes any possible side effects not listed in the package leaflet. You can also report side effects directly via the Yellow Card Scheme at www.mhra.gov.uk/yellowcard

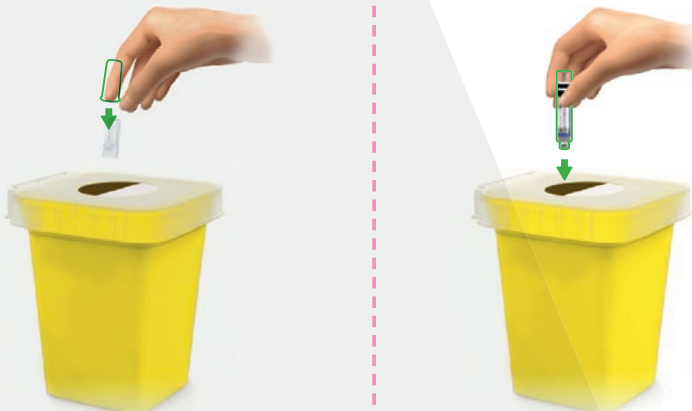
In the Republic of Ireland, side effects can be reported directly to the HPRA online at www.hpra.ie or by calling (01) 6764971.

By reporting side effects, you can help provide more information on the safety of this medicine.

Step 5: Remove and throw away your used needle and empty cartridge (continued)

3. Disposing of your used needles and empty cartridges

- Put your used needles and empty cartridges in a cleared sharps disposal container right away after use. Do not throw away (dispose of) cartridges or needles in your household trash unless your community guidelines permit this.



- If you do not have a sharps disposal container, you may use a household container that is:
 - made of a heavy-duty plastic,
 - can be closed with a tight-fitting, puncture-resistant lid, without sharps being able to come out,
 - upright and stable during use,
 - leak-resistant, and
 - properly labelled to warn of hazardous waste inside the container.

4. When your sharps disposal container is almost full, you will need to follow your community guidelines for the right way to dispose of your sharps disposal container. There may be local laws about how you should throw away used needles and syringes.

- **Do not** recycle your used sharps disposal container.

5. After removing the needle, recap the aluetta pen injector.

