

Prime your aluetta™ pen injector & changing cartridge:

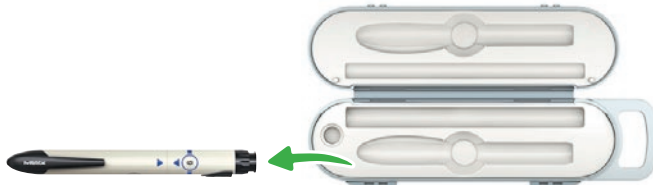
Step 1: Select your aluetta pen injector and cartridge

1. Wash your hands with soap and water then dry them well.

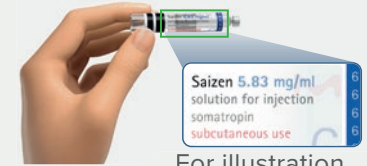


2. Remove the aluetta pen injector from the storage box.

Note: All pen injectors allow dosing in increments of 0.1 mg across a range from 0.0 to 5.5 mg.



aluetta™

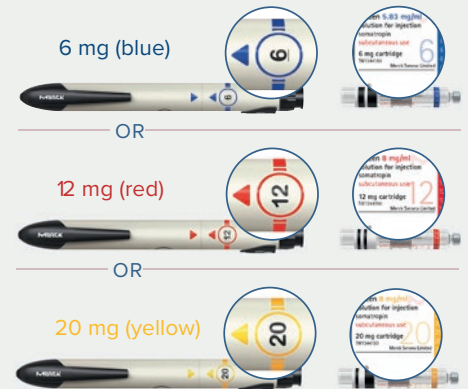


For illustration purposes only

3. Confirm the label says Saizen (somatropin).
4. The aluetta pen injector and cartridge are available in 3 presentations: 6 mg, 12 mg and 20 mg.

Caution:

Always make sure the Saizen amount (in milligrams) on the cartridge label matches the number printed on the aluetta pen injector, and that this is the combination your healthcare professional prescribed to you.



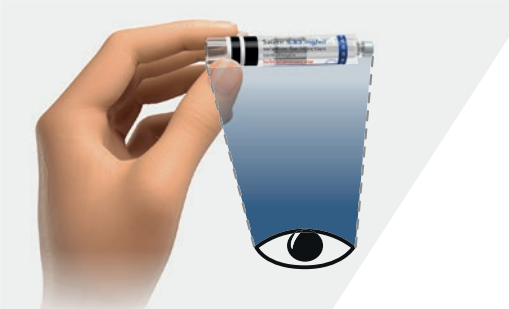
MERCK

UI-SAI-00388 | January 2025

Prime your aluetta™ pen injector & changing cartridge:

Step 2: Inspect your cartridge

1. Confirm the cartridge is not damaged or cracked.
2. Confirm that medicine:
 - is clear
 - is colourless
 - does not contain particles.

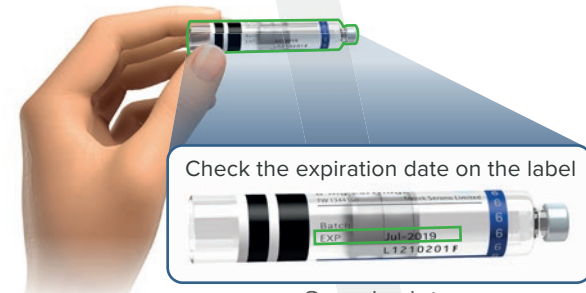


3. Confirm the expiration date on the cartridge has not passed.

Warning:

- **Do not** use the cartridge if it is damaged, or if the medicine is discoloured or cloudy.
- **Do not** use the cartridge if the expiration date on the cartridge has passed.

Doing so could cause an illness. Call your healthcare professional for questions.



Check the expiration date on the label

Sample date

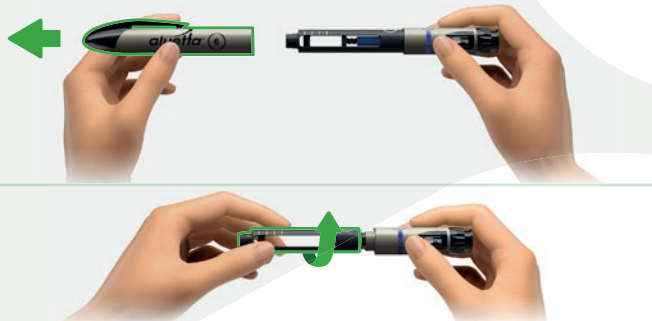
Prime your aluetta™ pen injector & changing cartridge:

Step 3: Insert your cartridge

When to insert a new cartridge:

- the first time you use the aluetta pen injector
- the cartridge is empty
- the cartridge has expired

1. Pull the cap off the aluetta pen injector.
2. Twist and remove cartridge holder from pen injector body.



3. If the cartridge holder contains an empty or expired cartridge, remove and throw it away in a sharps disposal container.
4. For information on proper sharps disposal instructions, see Step 10.3 in the aluetta™ Instructions For Use (IFU) “Disposing of your used needles and empty cartridges”.



Prime your aluetta™ pen injector & changing cartridge:

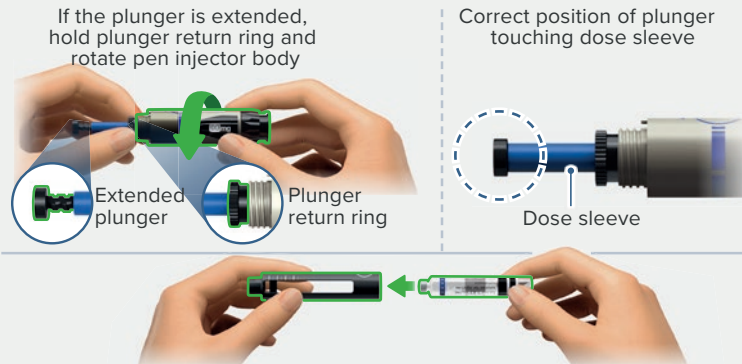
Step 3: Insert your cartridge (continued)

5. If the plunger is extended, hold plunger return ring and rotate the pen injector body until you cannot turn anymore. Make sure the plunger touches the dose sleeve.

Caution:

Do not force or push plunger.

6. Hold cartridge holder and push a new cartridge in with metal cap first.



7. Line up pen injector body with cartridge holder and twist cartridge holder back onto pen injector body until you cannot twist anymore.

The number (6, 12 or 20) printed on cartridge holder and pen injector body should line up.



Prime your aluetta™ pen injector & changing cartridge:

Step 4: Attach your needle

Note: Applies to Pencylcap, Micro/Ultra-Fine and AutoShield DUO needles.

1. Check the peel paper on the needle to make sure it is not broken and expiry date has not passed.

Warning:

Do not use needle if peel paper is broken or expiry date has passed. Doing so may cause an infection. Discard in your sharps container and get a new needle.

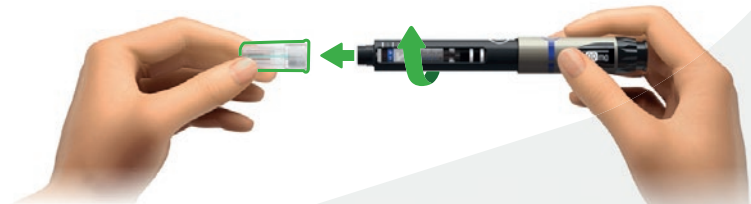
2. Peel off the peel paper from a new needle and discard in trash.



3. Hold needle straight and twist it onto the cartridge holder until you cannot twist anymore.

Warning:

Do not remove the outer needle cover until ready to prime or inject.



Prime your aluetta™ pen injector & changing cartridge:

Step 5: Prime your aluetta pen injector

Important:

Only prime the aluetta pen injector when starting a new cartridge to remove air.

1. Turn the dose selection knob to 0.2 mg, the dose window will show “0.2”.



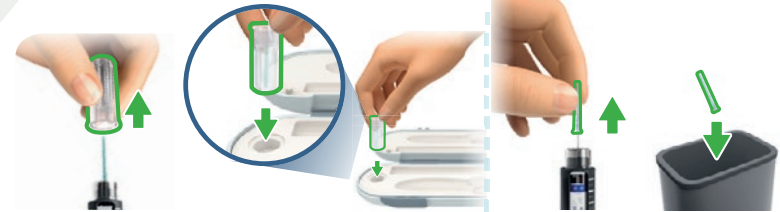
2. If you use the Pencilcap or Micro/Ultra-Fine needles:

- Pull off outer needle cover and place it in the well of the storage box. You might need this again for removing the needle after the injection.
- Carefully pull off needle shield and dispose of it.

OR If you use the AutoShield DUO Safety needle:

- Pull off outer needle cover and discard in the trash.

Pencilcap and Micro/Ultra-Fine needles



OR

AutoShield DUO Safety needle



Prime your aluetta™ pen injector & changing cartridge:

Step 5: Prime your aluetta pen injector (continued)

1. With the needle pointing up, gently tap the cartridge with your finger so that any air bubbles rise to the top.
2. Continue holding the aluetta pen injector with needle pointing up. Push the dose injection button until it stops. A tiny drop(s) of liquid will appear at the tip of the needle.

Warning:

Do not wipe the droplet from the needle after priming.

Important:

If you do not see drop(s) of Saizen come out of the needle tip, repeat the priming steps up to 5 times.

If the problem continues after trying 5 times, remove the cartridge, call your healthcare professional.

Reporting of side effects:

If you get any side effects, talk to your doctor, pharmacist or nurse. This includes any possible side effects not listed in the package leaflet. You can also report side effects directly via the Yellow Card Scheme at www.mhra.gov.uk/yellowcard

In the Republic of Ireland, side effects can be reported directly to the HPRA online at www.hpra.ie or by calling (01) 6764971.

By reporting side effects, you can help provide more information on the safety of this medicine.

